

BMPS TERM 2 PANUI

Kia Ora e te Whānau

I would like to begin by acknowledging the whānau, school and community in Whangārei. Our aroha and prayers are with them at this difficult time.

This panui is a celebration of some of the fun and learning that has been happening at BMPS. Below you will find links that share highlights from last term's Waiheke trip, senior camp and our carving group.

[Waiheke 2023 BMPS](#)

[Kahu Camp 2023](#)

[Carving group 2023](#)

Did you know that this year we are celebrating our 30th anniversary with Mainfreight? Next term we will be having a very special celebration assembly to honour and thank Mainfreight for all that they have done and do for BMPS and our community. There will be more information about this soon.

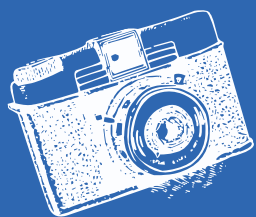
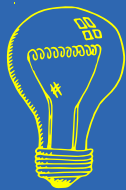


The inclement weather has not stopped amazing learning and fun at BMPS. Please enjoy the rest of our panui which shares some of what has been happening in each class.

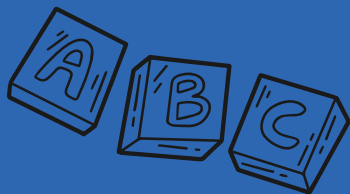
Best wishes.

fee

Kiwi 2



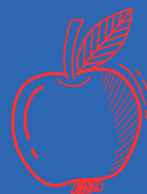
Kiwi 4



Kiwi 5



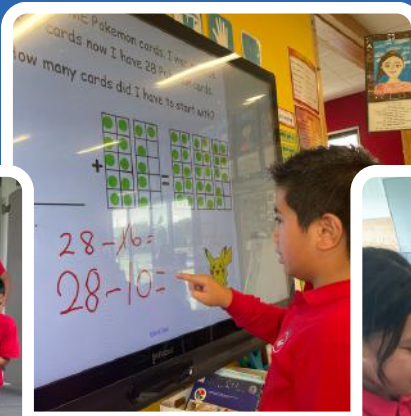
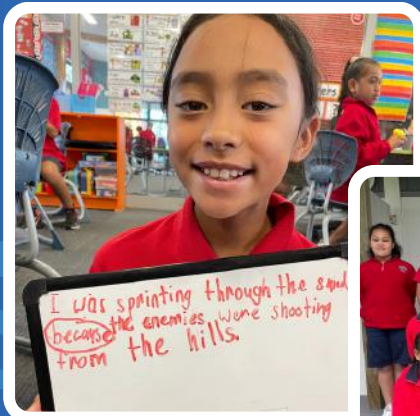
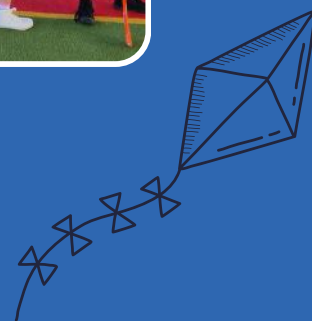
Kiwi 6



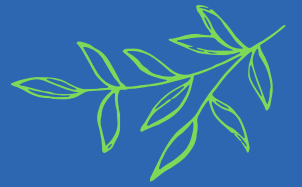
Kiwi 7



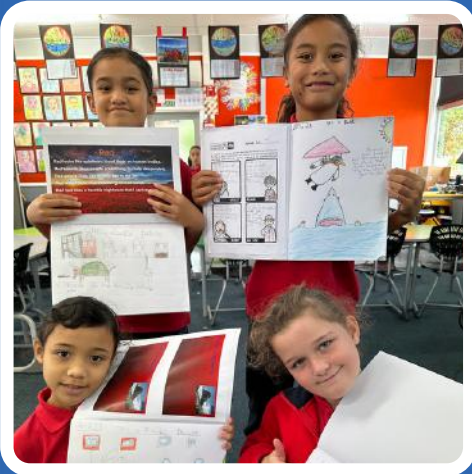
Tui 2



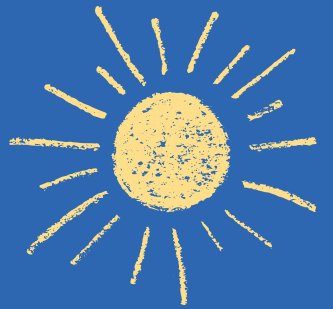
Tui 3



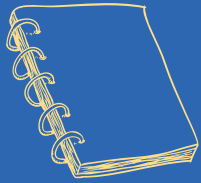
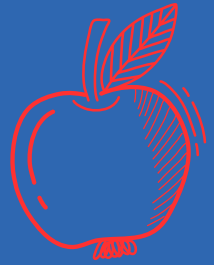
Tui 4



Tui 5



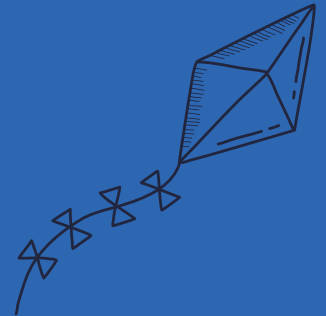
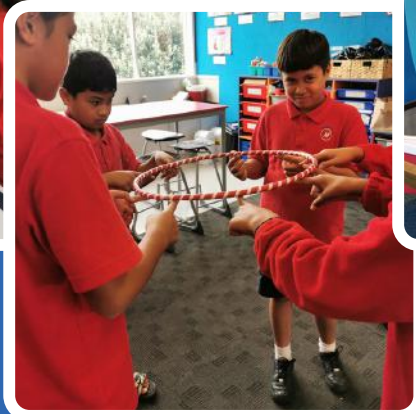
Tui 6



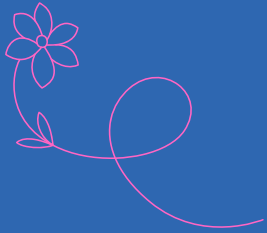
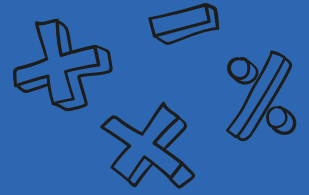
Kahu 1



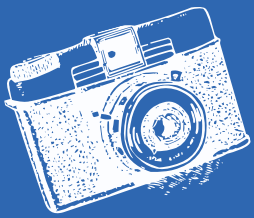
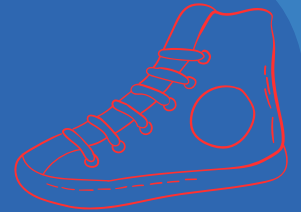
Kahu 2



Kahu 3



Kahu 4



Kahu 5





Kahu 6



VIP Lounge



Duffy



Library



TLC



A great place to learn.
A fun place to be!
"ANYTHING IS POSSIBLE"